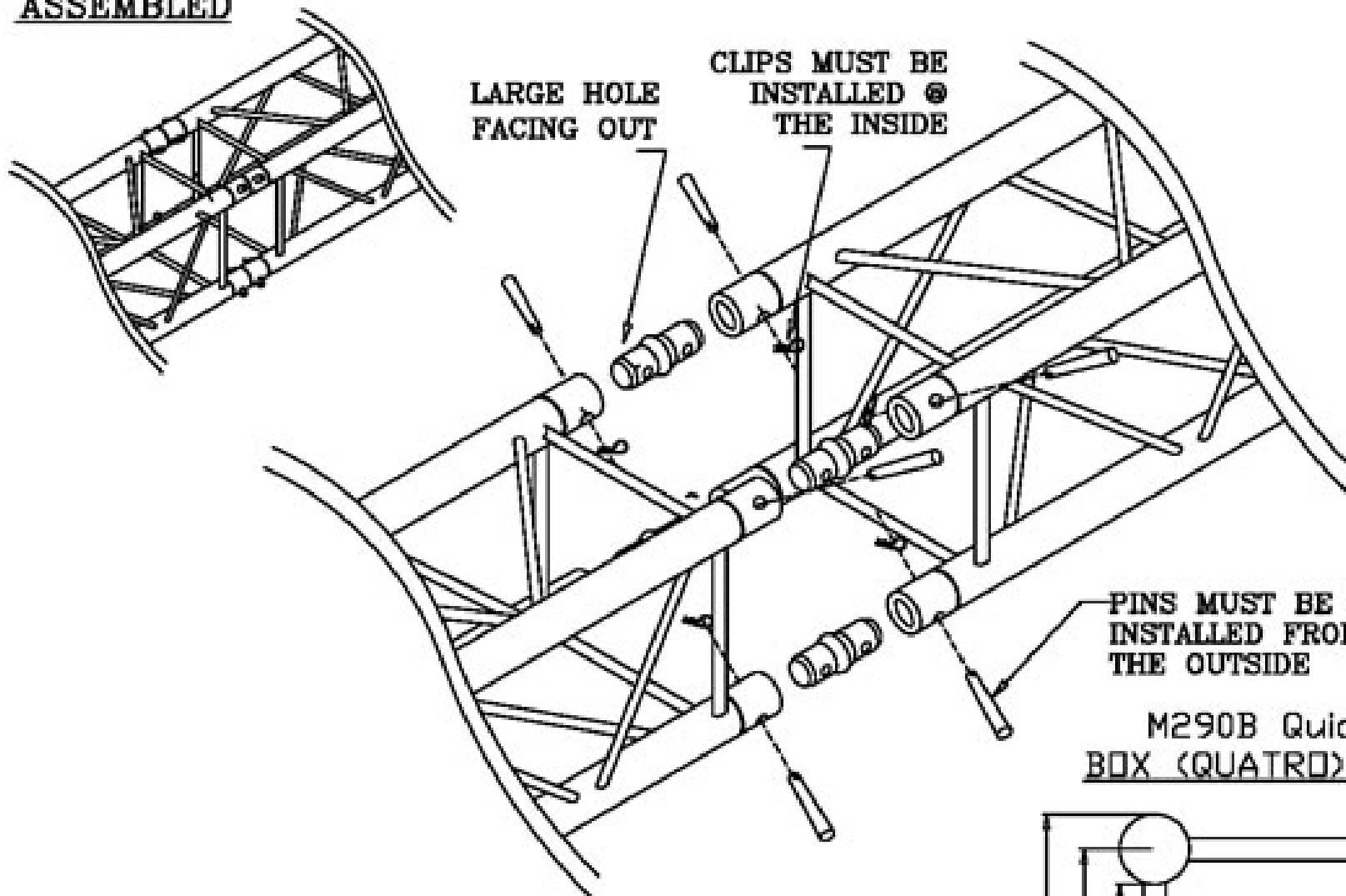


ASSEMBLED

**PURE  
100%  
TRUSS**



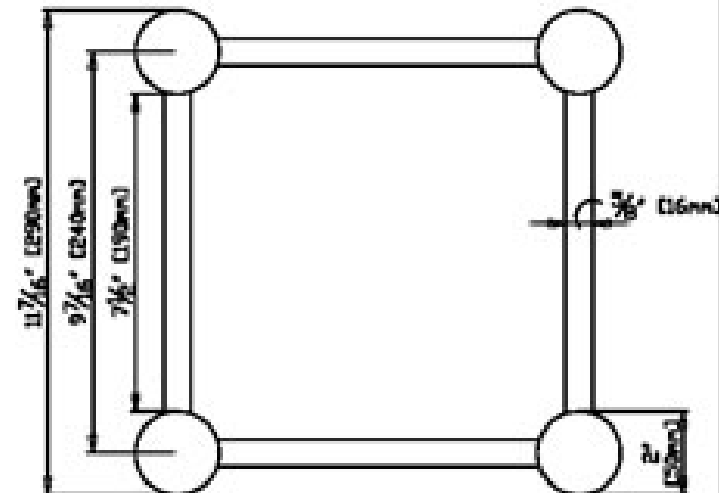
CONNECTION DETAIL EXPLODED VIEW

NOTE:

BOTH HOLES (IN TUBE AND CONNECTOR) AND PINS ARE TAPERED. PINS SHOULD BE INSERTED THROUGH THE OUTSIDE OF THE SYSTEM AS SHOWN.

NOTE:

IT IS NORMAL FOR SOME PINS/CONNECTIONS TO BE TIGHT AT FIRST. A HARD RUBBER Mallet MAY BE USED TO INSTALL TIGHT PINS.



M290B QuickTruss IS CONSTRUCTED FROM 2"x.08" THICK MAIN TUBES WITH 5/8"x.08" DIAGONALS.